

# MIXPAC™ ecopaCC™

THE REVOLUTIONARY TWO-COMPONENT  
APPLICATION SYSTEM



 medmix

INDUSTRY



# MIXPAC™ ecopaCC™

## 600/1500ML CONSTRUCTION SET



### ACCESSORIES

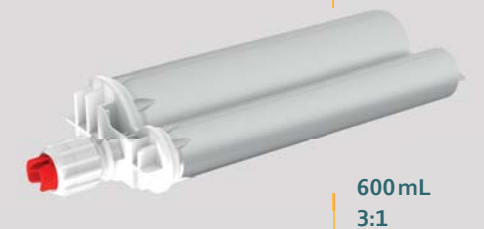
| ID     | Description                        |
|--------|------------------------------------|
| 300326 | Ribbon adapter                     |
| 301581 | Extension tube<br>Ø 8.5 mm, 200 mm |
| 300812 | Extension tube<br>Ø 7.0 mm, 190 mm |

ACCESSORIES

MIXER



CARTRIDGE



DISPENSING SYSTEM



Integrated MIXPAC ecopaCC dispenser

MIXPAC™ ecopaCC™

# APPLICATION SYSTEM

## 600/1500ML CONSTRUCTION SET



### CARTRIDGE ASSEMBLY 600/1500 ML



QUADRO mixer



ecopaCC foil cartridge






Integrated MIXPAC ecopaCC dispenser

### ecopaCC™ CARTRIDGE




| Ratio Set/<br>Volume | ID     | Article            | Foil<br>Material | State of Foil     | Units/<br>Pallet | Mixer<br>Technology | Matching Sleeve |
|----------------------|--------|--------------------|------------------|-------------------|------------------|---------------------|-----------------|
| 1:1<br>600 mL        | 163117 | KEC 600-01-502-01  | laminated        | Pre Collapsed     | 5600             | MGQ ●● KMGQ ●●      | 1:1 600mL       |
|                      | 182743 | NEC 600-01-502-01  | laminated        | Not Pre Collapsed | 2100             | MGQ ●● KMGQ ●●      | 1:1 600mL       |
|                      | 167211 | KEC 600-01-601-01  | coextruded       | Pre Collapsed     | 5600             | MGQ ●● KMGQ ●●      | 1:1 600mL       |
|                      | 182746 | NEC 600-01-601-01  | coextruded       | Not Pre Collapsed | 2100             | MGQ ●● KMGQ ●●      | 1:1 600mL       |
| 3:1<br>600 mL        | 163130 | KEC 600-03-502-01  | laminated        | Pre Collapsed     | 5600             | MGQ ●● KMGQ ●●      | 3:1 600mL       |
|                      | 182744 | NEC 600-03-502-01  | laminated        | Not Pre Collapsed | 2100             | MGQ ●● KMGQ ●●      | 3:1 600mL       |
|                      | 167125 | KEC 600-03-601-01  | coextruded       | Pre Collapsed     | 5600             | MGQ ●● KMGQ ●●      | 3:1 600mL       |
|                      | 182747 | NEC 600-03-601-01  | coextruded       | Not Pre Collapsed | 2100             | MGQ ●● KMGQ ●●      | 3:1 600mL       |
| 1:1<br>1500 mL       | 163194 | KEC 1500-01-502-01 | laminated        | Pre Collapsed     | 2100             | MGQ ●● KMGQ ●●      | 1:1 1500mL      |
|                      | 182745 | NEC 1500-01-502-01 | laminated        | Not Pre Collapsed | 1050             | MGQ ●● KMGQ ●●      | 1:1 1500mL      |
|                      | 167223 | KEC 1500-01-601-01 | coextruded       | Pre Collapsed     | 2100             | MGQ ●● KMGQ ●●      | 1:1 1500mL      |
|                      | 182748 | NEC 1500-01-601-01 | coextruded       | Not Pre Collapsed | 1050             | MGQ ●● KMGQ ●●      | 1:1 1500mL      |



## MATCHING MIXERS

|  | ID     | Article       | Number of Elements | Inner Diameter Ø mm/inch | Volume (mL) | Units/Box |                 |                  |                |                |
|--|--------|---------------|--------------------|--------------------------|-------------|-----------|-----------------|------------------|----------------|----------------|
|  |        |               |                    |                          |             |           | Stepped Tip (T) | Straight Tip (D) | Hanger Bracket | Extension tube |
|   | 300469 | MGQ 08-18T    | 18                 | 8.7/0.343                | 6.7         | 1200      | ✓               |                  |                | ✓              |
|  | 300454 | MGQ 08-20D    | 20                 | 8.7/0.343                | 7.57        | 1000      |                 | ✓                |                | ✓              |
|  | 300453 | MGQ 08-20T    | 20                 | 8.7/0.343                | 7.34        | 1000      | ✓               |                  |                |                |
|  | 300462 | MGQ 08-24D    | 24                 | 8.7/0.343                | 8.61        | 800       |                 | ✓                |                | ✓              |
|  | 300461 | MGQ 08-24T    | 24                 | 8.7/0.343                | 8.76        | 800       | ✓               |                  |                | ✓              |
|  | 154897 | MGQ 10-16D    | 16                 | 10.7/0.421               | 12.69       | 800       |                 | ✓                |                | ✓              |
|  | 300493 | MGQ 10-19D    | 19                 | 10.7/0.421               | 12.15       | 800       |                 | ✓                |                | ✓              |
|  | 300497 | MGQ 10-24D    | 24                 | 10.7/0.421               | 14.49       | 650       |                 | ✓                |                | ✓              |
|   | 158039 | MGQ 10-10A-02 | 10                 | 10/0.394                 | 11.2        | 500       |                 |                  |                | ✓              |
|  | 119514 | MGQ 10-14A    | 14                 | 10.7/0.421               | 11.9        | 1188      |                 |                  |                | ✓              |
|  | 154893 | MGQ 10-16A    | 16                 | 10.7/0.421               | 15.0        | 800       |                 |                  |                | ✓              |
|  | 154913 | MGQ 10-19A    | 19                 | 10.7/0.421               | 14.0        | 400       |                 |                  |                | ✓              |
|  | 154898 | MGQ 10-19A-95 | 19                 | 10.7/0.421               | 12.5        | 400       |                 |                  |                | ✓              |
|  |        |               |                    |                          |             |           |                 |                  |                |                |
|  | 154926 | MGQ 14-20     | 20                 | 14/0.551                 | 34.7        | 700       |                 |                  |                | ✓              |
|  | 154930 | KMGQ 14-20E   | 20                 | 14/0.551                 | 61          | 400       |                 |                  |                | ✓              |
|  | 154931 | KMGQ 14-38E   | 18                 | 13/0.512                 | 53          | 400       |                 |                  |                | ✓              |
|  |        |               |                    | 20                       | 14/0.551    |           |                 |                  |                |                |

## INTEGRATED MIXPAC ECOPACC DISPENSER




|   | ID     | Article             | Volume mL |      | Ratio |     | Force (kN) |
|---|--------|---------------------|-----------|------|-------|-----|------------|
|   |        |                     | 600       | 1500 | 1:1   | 3:1 |            |
| ecopaCC Integrated Dispenser manual<br>    | 185855 | DM2C 600-01-R25-301 | ✓         |      | ✓     |     | 4.5        |
| ecopaCC Integrated Dispenser pneumatic<br> | 185860 | DP2C 600-01-525-131 | ✓         |      | ✓     |     | 5.25       |
| ecopaCC Integrated Dispenser electric<br>  | 185861 | DB2C 600-01-500-911 | ✓         |      | ✓     |     | 5.0        |

**ECOPACC COMPATIBLE CONVENTIONAL DISPENSERS,  
TO BE USED WITH SUPPORT SLEEVE**

|   | ID     | Article              | Volume mL |      | Ratio |     | Force (kN) |
|---|--------|----------------------|-----------|------|-------|-----|------------|
|   |        |                      | 600       | 1500 | 1:1   | 3:1 |            |
| <b>Standard</b><br>Manual Dispenser*     | 151766 | DM2K 600-01-R26-401  | ✓         |      | ✓     |     | 5.0        |
|   | 177827 | DM2C 585-03-R25-001  | ✓         |      |       | ✓   | 4.5        |
|   | 159304 | DM2C 1500-01-R25-001 |           | ✓    | ✓     |     | 4.5        |
| <b>Standard</b><br>Pneumatic Dispenser*  | 152352 | DP2K 600-01-400-101  | ✓         |      | ✓     |     | 4          |
|   | 152487 | DP2K 585-03-400-101  | ✓         |      |       | ✓   | 4          |
|   | 177895 | DP2C 1500-01-525-101 |           | ✓    | ✓     |     | 5.25       |
| <b>Standard</b><br>Cordless Dispenser*   | 152454 | DB2K 600-01-473-101  | ✓         |      | ✓     |     | 4.73       |
|   | 154476 | DB2K 585-03-270-001  | ✓         |      |       | ✓   | 2.7        |
|   | 152616 | DB2K 1500-01-500-101 |           | ✓    | ✓     |     | 5          |

\* Illustration purposes

**SUPPORT SLEEVE WITH INTEGRATED PISTONS**

| Ratio Set/ Volume   | ID     | Article            | Support Sleeve Material/Color | Pistons       | Units/ Box |
|---|--------|--------------------|-------------------------------|---------------|------------|
| <b>1:1</b><br>600 mL   | 163089 | ESC 600-01-801-01  | Aluminum anodized             | pre-assembled | 4          |
| <b>3:1</b><br>600 mL   | 163141 | ECS 600-03-801-01  | Aluminum anodized             | pre-assembled | 2          |
| <b>1:1</b><br>1500 mL  | 163142 | ECS 1500-01-801-01 | Aluminum anodized             | pre-assembled | 6          |

# DELIVERING INNOVATION. INSPIRING CONFIDENCE.

## EUROPE

### medmix Switzerland AG

Ruetistrasse 7  
9469 Haag, Switzerland  
Phone +41 81 414 70 00  
sales.industry@medmix.com  
www.medmix.swiss

## USA, SOUTH AMERICA, CANADA AND MEXICO

### medmix US Inc.

8 Willow St.  
Salem, NH 03079, USA  
Phone +1 603 893 2727  
sales.industry@medmix.com  
www.medmix.swiss

## UK AND IRELAND

### medmix UK Ltd.

1 Tealgate, Charnham Park, Hungerford  
Berkshire, RG17 0YT, United Kingdom  
Phone: +44 (0)1488 647 800  
sales.industry@medmix.com  
www.coxdispensers.com

## SPAIN

### medmix Spain S.L.

Av. Puerto de Alicante, 5-2  
46394 Riba-roja de Túria  
Valencia, Spain  
sales.spain@medmix.com  
www.medmix.swiss

## ASIA PACIFIC

### medmix China Ltd.

68 Bei Dou Lu, Minhang Shanghai  
200245, China  
Phone: +86 21 6430 68 68  
sales.industry@medmix.com  
www.medmix.swiss



Legal Notice: This brochure is a general presentation. The information contained in this publication is believed to be accurate and reliable but is not to be construed as implying any warranty or guarantee of performance. We waive any liability and indemnity for effects resulting from its application. Please, contact us for a description of the warranties and guarantees offered with our products. Directions for use and safety will be given separately. All information herein is subject to change without notice.

© 2024 medmix Switzerland AG All rights reserved.

medmix is a trademark belonging to medmix AG, and COX, MK and MIXPAC are trademarks belonging to medmix Switzerland AG.